

1. Problem I – Figure 1:

Using the appropriate charts find the following information

Socket weld fittings, 2000#, 2 inch pipe

Find length of pipe to be installed

A = _____

B = _____

C = _____

D = _____

Screw fittings, 2000#, 1 inch pipe

Find length of pipe to be installed

A = _____

B = _____

C = _____

D = _____

Steel butt-welding fittings, 1-1/2 inch pipe

F-1 Short Radius

F-2 Long Radius

Find length of pipe to be installed

A = _____

B = _____

C = _____

D = _____

Cast iron flanged fittings, 125#, 3 inch pipe

Find length of pipe to be installed

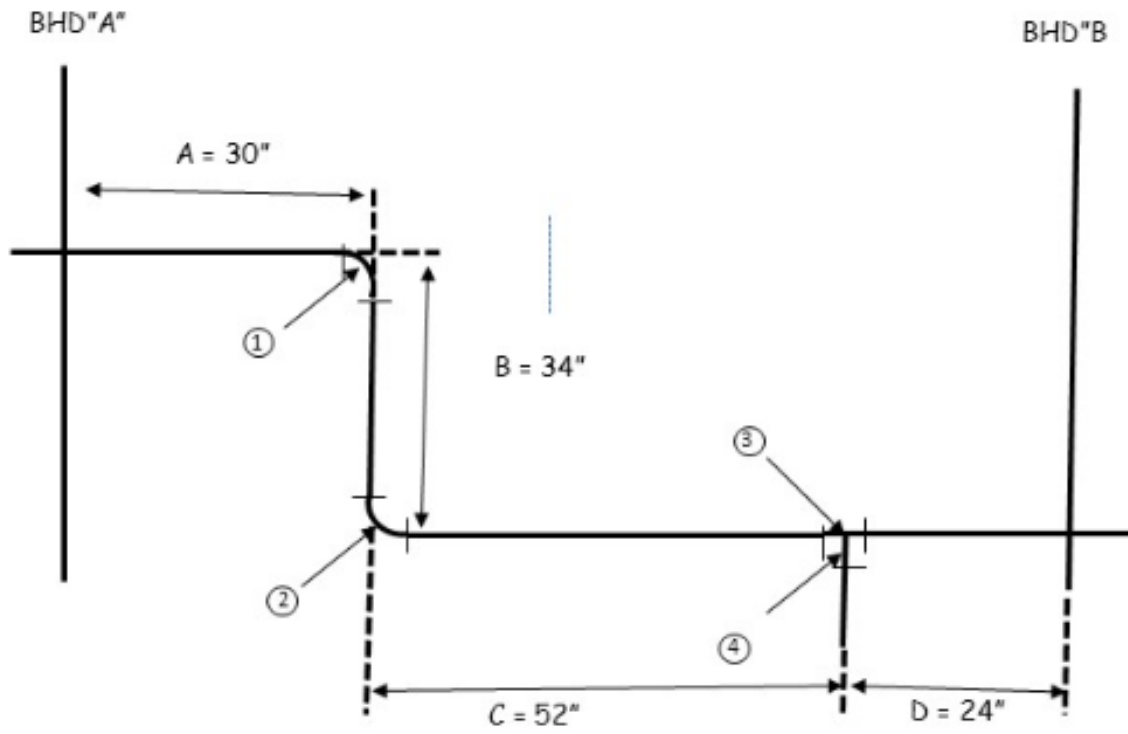
A = _____

B = _____

C = _____

D = _____

Take-Outs, Figure 1



2. Problem II – Figure 2:

Using the appropriate charts find the following information.

Steel butt welding fittings, 1-1/4 inches pipe.

A = _____ I = _____

E = _____ J = _____

F = _____ K = _____

G = _____ L = _____

H = _____

Cast iron flanged fittings, 125#, 4 inch pipe.

Find the pipe length to be installed.

A = _____ G = _____

B = _____ H = _____

C = _____ I = _____

D = _____ J = _____

E = _____ K = _____

F = _____ L = _____

Socket weld, 2000#, 1/2 inch pipe.

Find the pipe length to be installed.

A = _____ G = _____

B = _____ H = _____

C = _____ I = _____

D = _____ J = _____

E = _____ K = _____

F = _____ L = _____

Steel Screwed fitting, 2000#, 2 inch pipe.

Find the pipe length to be installed.

A = _____

G = _____

B = _____

H = _____

C = _____

I = _____

D = _____

J = _____

E = _____

K = _____

F = _____

L = _____

EXHIBIT 142
Take-Outs, Figure 2

